

TERMINAL DRIVING

- DRIVE AT TERMINAL SPEED LIMITS
- STOP AT ALL INTERSECTIONS & STOP SIGNS
- NO PARKING ON RTG RUNWAYS
- DO NOT DRIVE THROUGH CONTAINER STORAGE BLOCKS
- DO NOT DRIVE UNDER HATCH LIDS OR SUSPENDED CONTAINERS
- DO NOT USE CELL PHONES OR OTHER HAND HELD ELECTRONIC DEVICES WHILE DRIVING
- SEAT BELTS TO BE WORN WHILE OPERATING ANY MOBILE EQUIPMENT
- REPORT ALL ACCIDENTS & INCIDENTS TO YOUR ILWU 514 SUPERVISOR AND/OR A GCT SUPERINTENDENT IMMEDIATELY

TERMINAL SPEED LIMITS

UNLESS NOTED DIFFERENTLY ON PLAN:

TERMINAL ZONE SPEED LIMIT: 20 KPH (MAX)

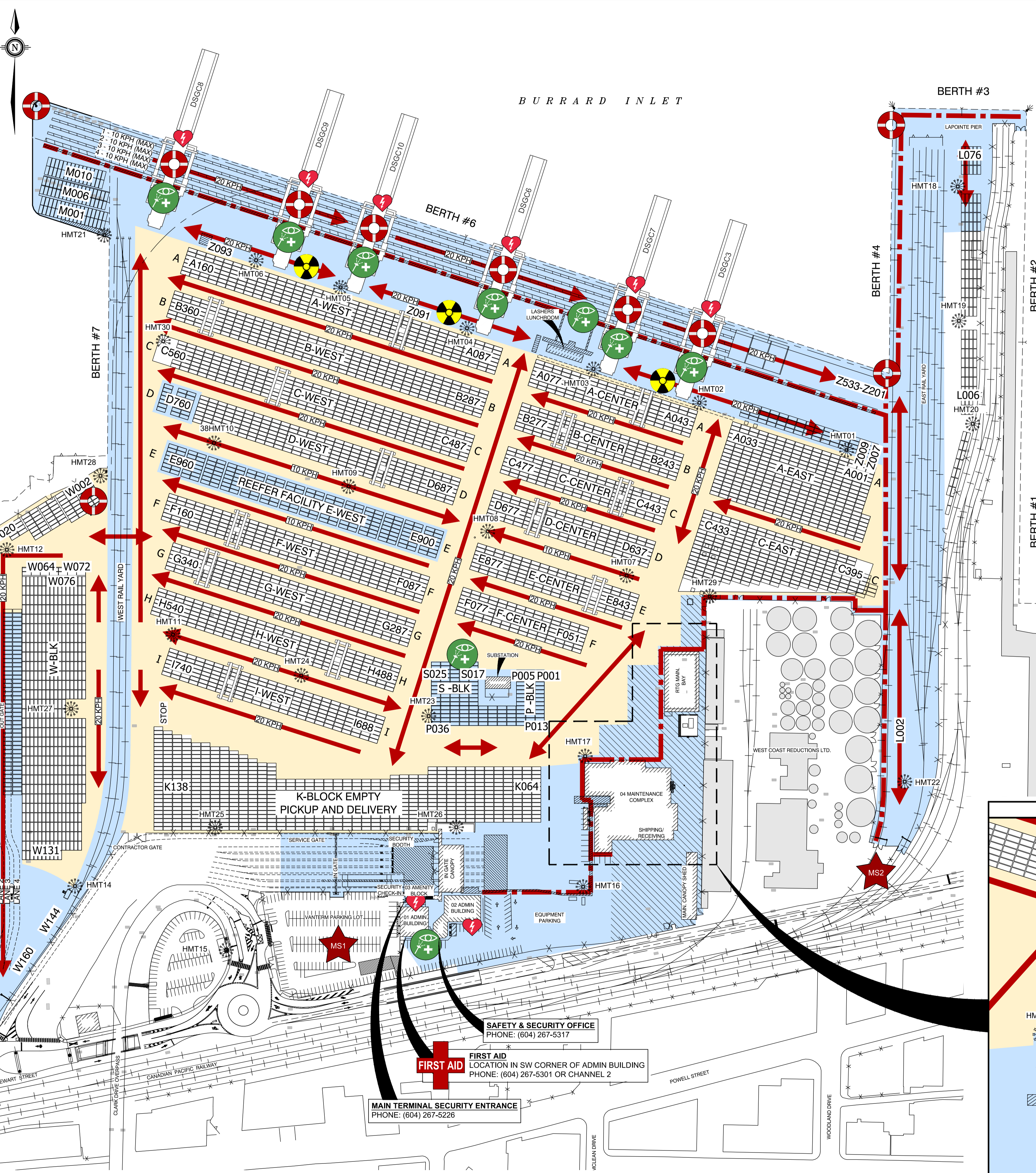
BERTH ZONE SPEED LIMIT: 10 KPH (MAX)

REEFER STORAGE AREA: 10KPH (MAX)

MUSTER STATION

MS 1 = VANTERM PARKING LOT BY ADMINISTRATION BUILDING

MS 2 = SOUTH END OF EAST RAIL YARD



LEGEND

- HIGHMAST/LOWMAST
- FLASHING RAIL SIGNAL LIGHT
- AED LOCATION
- SPILL KIT LOCATION (COLOURS: GREY, ORANGE, YELLOW & RED)
- LIFE RING BOX LOCATION
- WINDSOCK LOCATION
- RADIATION PORTAL LOCATION
- EYEWASH STATION
- FIRE HYDRANT
- FIRST AID STATION
- MUSTER STATION
- TWO WAY TRAFFIC FLOW
- ONE WAY TRAFFIC FLOW

NO WALK ZONES AND WALKWAYS

- RESTRICTED WALK ZONE
- RESTRICTED SPEED ZONE - MAINT. AREA
- *** NO WALK ZONE ***
- DESIGNATED PERSONNEL WALKWAY

MANDATORY PPE

- CSA-APPROVED PROTECTIVE FOOTWEAR.
- CSA-APPROVED HIGH-VISIBILITY VEST, JACKET OR COVERALLS.
- CSA-APPROVED TYPE-2 HARDHAT REQUIRED WHEN WORKING ON THE VESSEL, ON RAILCARS, OR UNDER ANY CRANES OR OVERHEAD HAZARDS.

VANTERM RADIO CHANNELS

#	CHANNEL	#	CHANNEL
1	WEST RAIL	10	GANTRY 10
2	DOCK/SHIP FIRST AID	11	YARD EMPTIES
3	GANTRY 3	12	YARD IMPORT
4	OIL OPERATIONS	13	YARD EXPORT
5	EAST RAIL	14	DECKING
6	GANTRY 6	15	SIGNALS/BUNNY BUS
7	GANTRY 7	16	MAINTENANCE CALL-IN
8	GANTRY 8	17	MAINTENANCE WORKING
9	GANTRY 9	18	MAINTENANCE WORKING

BENCHMARK:

SITE LAYOUT IS REFERENCED TO A LOCAL PROJECT GRID DISTINCT FROM UTM GRID. ELEVATIONS ARE IN METERS AND ARE GIVEN WITH RESPECT TO CHART DATUM DERIVED FROM MONUMENT VPA-07 LOCATED AT THE TOP OF CLARK DRIVE OVERPASS ON THE WALKWAY. ELV=17.094M

SURVEYED BY:

N/A

CIVIC ADDRESS:

VANTERM CONTAINER TERMINAL
1300 STEWART STREET
VANCOUVER, BRITISH COLUMBIA
V5L 4X5, CANADA

LEGAL DESCRIPTION:

GCT CANADA HEAD OFFICE
400 - 2825 VIRTUAL WAY
VANCOUVER, BRITISH COLUMBIA
V5M 4X5, CANADA

SCALE:

AS SHOWN

This drawing must not be reproduced without the written permission of R.F. Binnie & Associates Ltd.
This drawing is not to be used for construction unless it is stamped "ISSUED FOR CONSTRUCTION" and signed by R.F. Binnie & Associates Ltd. It is the contractor's responsibility to ensure that they are in possession of the latest revision of this drawing.

NOV13/25	P1	ISSUED FOR REVIEW
ISSUED:	M/D/Y	DESCRIPTION
REVISION:		

PROJECT:

VANTERM CONTAINER TERMINAL
GENERAL SITE INFORMATION

CLIENT:

BINNIE

The people behind your infrastructure.

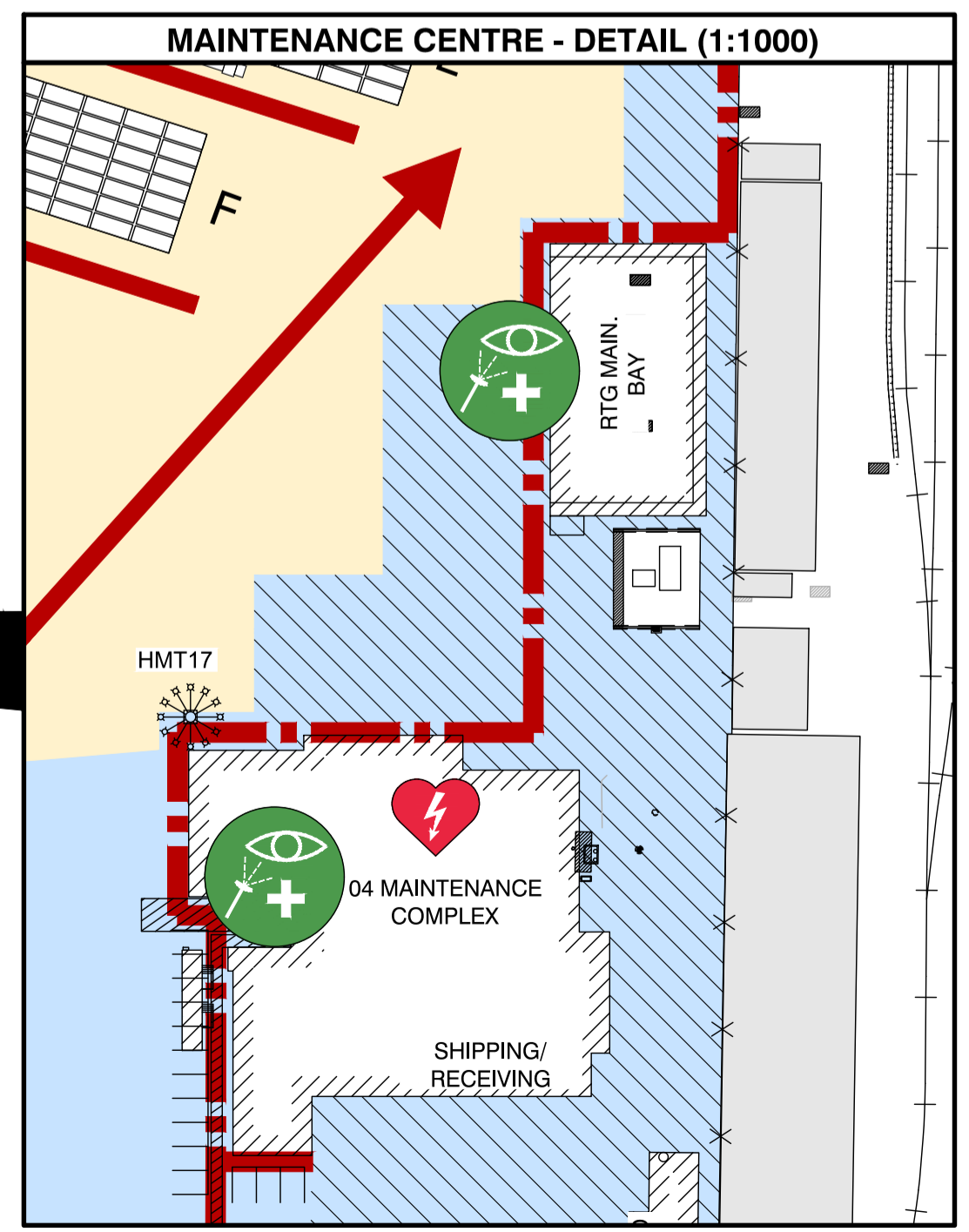
R.F. BINNIE & ASSOCIATES LTD.
300 - 4940 Canada Way,
Burnaby, BC V5G 4K6
TEL 604 420 1721
BINNIE.com

DATE: 11/05/2025	SEAL:
DRAWN: MG	
DESIGN: MG	
CHECKED: SD	
SCALE: AS SHOWN	

SHEET TITLE:

SITE SAFETY
NO-WALK ZONES, WALKWAYS
DRIVING LOCATIONS
AND EQUIPMENT LOCATIONS

DRAWING NO.:	REV.
19-0100-5010	P1



0 100

ALL DISTANCES IN METERS

PLAN

SCALE 1:1500

PLOTTED: 2025-02-13 11:45:41 AM USER: MGRAND
 FILE: \\V:\B\19-0100\PROJECTS\2024\19-0100-5010 - GCT VANTERM CONTAINER TERMINAL GENERAL SITE INFORMATION.dwg LAYOUT: 5010